

## Crosby Interim Coastal defences

### Why do we need to put in some coastal defences?

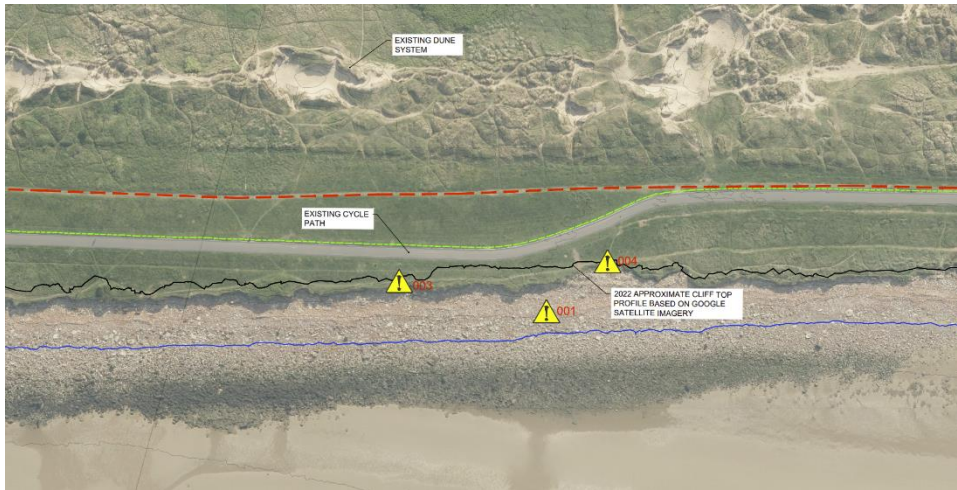
The project, Crosby Interim Coastal Defences, aims to put in some coastal protection to protect the coastline from being lost at a place where paths and pipelines are at high risk. The area is being washed away because of large waves and storms moving the sand and rubble away from this area. This area normally loses between 0.5m to 1m per year, but the biggest loss of land occurred over the winter of 2013 and 2014 when 13m was lost.

There are no properties at risk of being washed away, but the pathway is part of the King Charles III coastal walking path and a national cycling route. This path is also used to get to the sewer pumping station building. Behind the path is a large sewer pipe buried in the ground that takes foul water from about 12,000 properties in Crosby and Hightown.

Photos of the coast



Eroding coastline at Crosby adjacent to the path



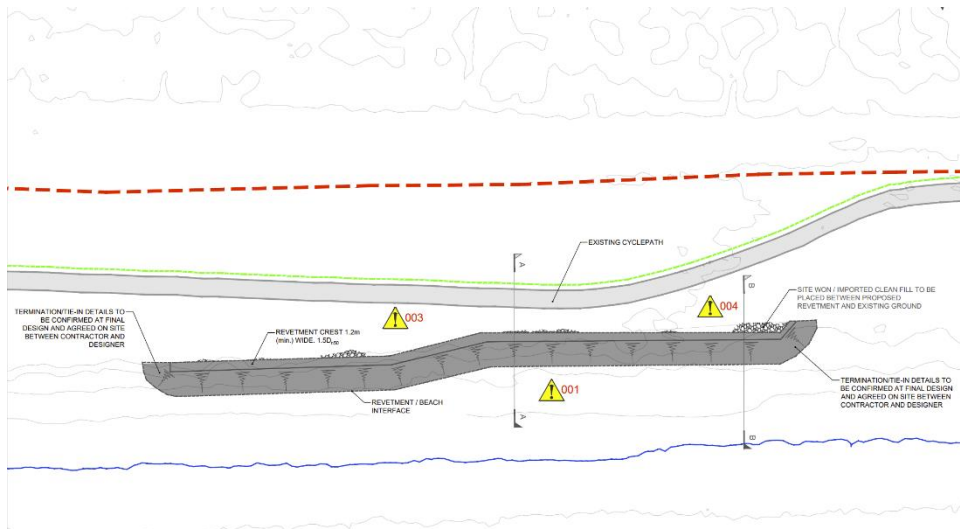
Map showing the location of the path, sewer pipe, and edge of the coast.



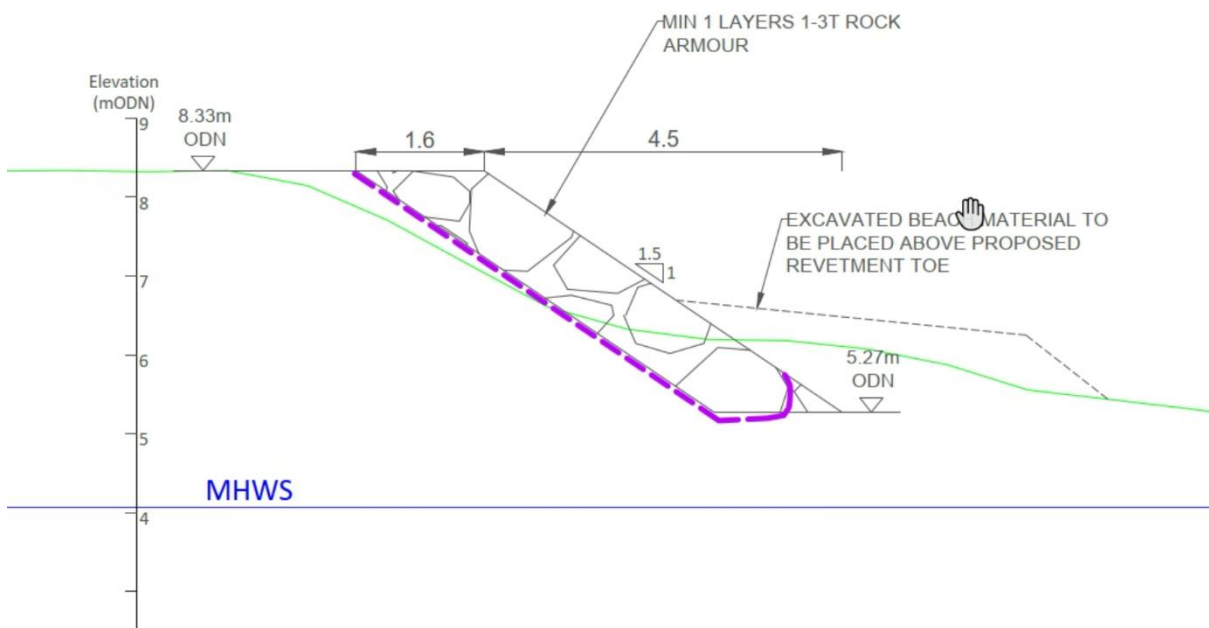
Images to show the loss of land between 2012 and 2023.

## How will we protect the coast?

The project will place a protective layer of tough material over the existing rubble and place large boulders on top of this. This is known as rock armour. This will prevent the waves moving the rubble around and washing away the coastline. This will be about 120m long.



Technical drawing to show the location of the rock armour to protect the coastline.



Cross section diagram of the rock armour to provide the coastal protection.

It is hoped the work will commence this year subject to planning permission and consent due to it being a highly designated environment. If however a large storm occurs and significant erosion takes place in the mean time the Council will undertake the work under its emergency powers.