

An aerial photograph showing Crosby Coastal Park. The park features a large green field, a paved path, and a parking lot filled with cars. To the left, there are residential buildings, including a large white multi-story house. In the background, the Sefton Coast is visible with a pebble beach and the sea. Further inland, a city skyline with industrial cranes can be seen under a cloudy sky.

# Crosby Coastal Park: A Vision

## The future for the southern gateway to the Sefton Coast



# Crosby Coastal Park – between land and sea

**Exciting and full of surprises, always changing as the winds and tides constantly influence its contours, the Sefton coast is a dynamic landscape that shapes and inspires the borough.**

**Crosby Coastal Park is a key gateway to this stunning coast.**

**We want to explore opportunities to protect, improve and develop this area and what it can offer to residents, visitors and businesses.**

**We have to ensure this is done in a balanced way; a way that will conserve our precious habitats and the species they support, whilst encouraging sustainable ideas that will increase wellbeing and economic opportunities.**

## Crosby Coastal Park: **natural**, artistic, historic


Special plants  
and animals  
such as Skylarks,  
migrating birds  
and some of the  
rarest plants in  
the UK



Photo courtesy of I. Wolfenden




## Crosby Coastal Park – natural, artistic, historic



The biggest open-air  
art gallery in the  
country...



## Crosby Coastal Park – natural, artistic, historic



**A prehistoric  
forest, WWII  
remains, maritime  
history – we've got  
10,000 years of  
heritage**

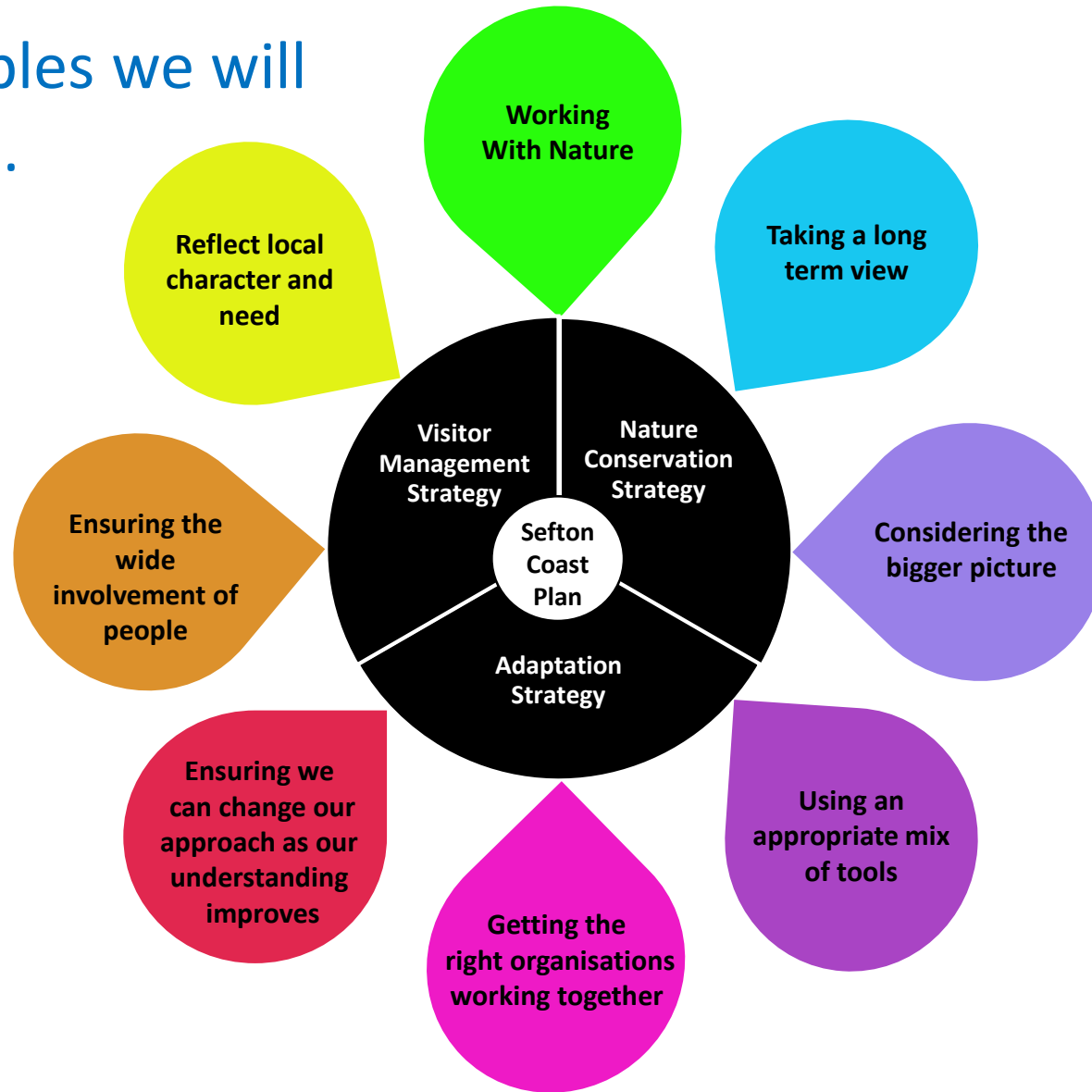


# Sefton Coast Plan – long term goals

**We want to:**

- **Conserve and enhance the natural and cultural heritage of the coast**
- **Adapt to coastal and climate change**
- **Drive sustainable local economic growth**
- **Provide long-term health and wellbeing benefits**

# Key principles we will work to.....



# Looking forward to 2030

- Through Sefton2030 and the Sefton Coast Plan consultation, our communities said they wanted Crosby Coastal Park to:

Be more  
accessible

Feel better  
connected with  
more transport  
links

Protect  
important  
wildlife and  
features

Have more  
facilities for  
visitors

Be  
sustainable

Have zoned  
areas for  
activities

Be safer and  
cleaner

Have better  
signage to, and  
interpretation of,  
the area

# Crosby Coastal Park 2030 - by all of us, for all of us, for now and future generations

## Together a stronger community

In 2030 the Sefton community plays a part in caring for the park and benefits from the opportunities of working in the area.



## A borough for everyone

In 2030 the park is accessible to all in our community - everyone enjoys using it, and the landscape helps people live happy and healthy lives.

## Living, working and having fun

In 2030 the park is recognised as a reason to live in the area, with superb leisure facilities for both residents and visitors to enjoy.



## Visit, explore and enjoy

In 2030 the park is a “must-visit” destination, boasting sea views, artwork, vast landscapes and thriving wildlife. Transport connections will be better and linked with a new coastal path and cycle route.



## A clean, green and beautiful borough

In 2030 Sefton is internationally recognised for its outstanding natural beauty and committed to becoming a green and sustainable borough.

The park is a key part of this, both in conserving habitats for its important wildlife and allowing visitors to enjoy and learn about the natural environment.

## Ready for the future

In 2030 we will be using the latest technology to understand and protect our coast in a changing climate, preparing for the impacts of sea-level rise and changing weather patterns.





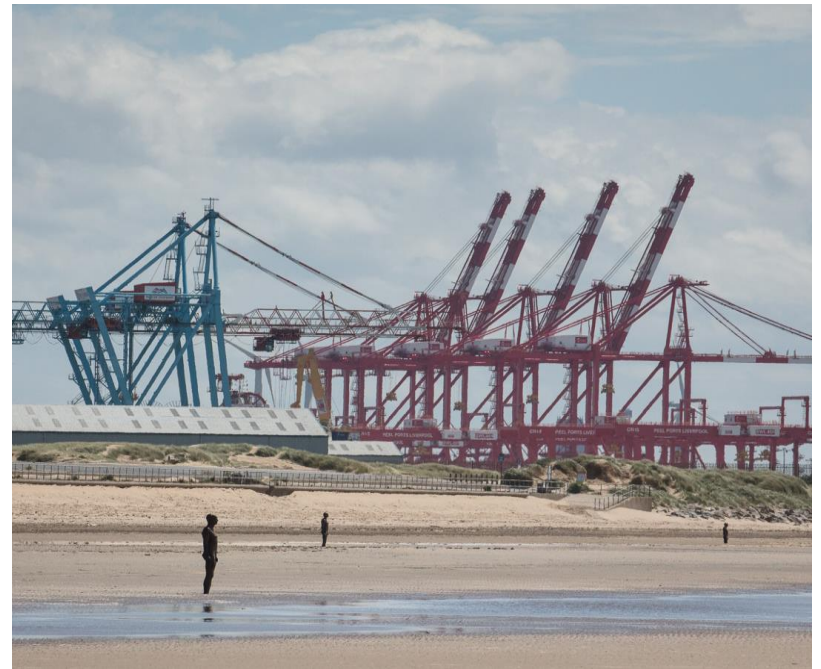
## Open for business

In 2030 local businesses are thriving. Visitors are welcomed to the park and the attractive surrounding area, supporting business and boosting the local economy.

## On the move

In 2030 people can easily access the park using public transport and enjoy a range of walking and cycling routes that link the park to a wider network of routes and greenspaces.

This green network is managed in a way that balances the needs of people and wildlife.



Enjoying the benefits the park has to offer for their physical and emotional health and wellbeing

Able to access with ease and enjoy the linked open spaces in the park and surrounding area

Conserving and enhancing important the natural and cultural features of the park whilst adapting to future change

Working in partnership with local organisations, communities and businesses to shape sustainable long term growth and investment in the park and the surrounding area

Welcoming visitors to the park and surrounding area to enjoy the diverse natural, cultural and leisure attractions

Happy & Healthy

Connected

Caring

Actively Engaged

Proud

Crosby  
Coastal Park  
2030 A great  
place to be!  
Where people  
are...

**Not only “Another Place” – “Our Place” too!**



# What will Crosby Coastal Park look like in 2030?

## Zone A:

### Hightown to north of Hall Road West

#### In 2030 this zone of the park will have:

- A defined and designated nature reserve where important habitats and species will not be disturbed but can still be enjoyed
- More robust sea defences to prevent further coastal erosion
- On site interpretation to educate visitors and Park users about the cultural and natural heritage within the zone and encourage positive behaviours to conserve this heritage
- Better links to public transport, cycling and walking networks and other green spaces



## Zone B:

### Hall Road West to Burbo Bank Road

#### In 2030 this zone of the park will have:

- Enhanced visitor facilities such as toilets and café facilities, accessible to all
- Public open space and outdoor events space
- Better links to public transport, cycling and walking networks, including well designed signage and information provision
- Enhanced car parking and cycle storage
- Better on site interpretation
- A new sea wall to protect properties from coastal erosion
- Safe and fully accessible viewing points to see Antony Gormley's 'Another Place' and complementary artwork on the new sea wall

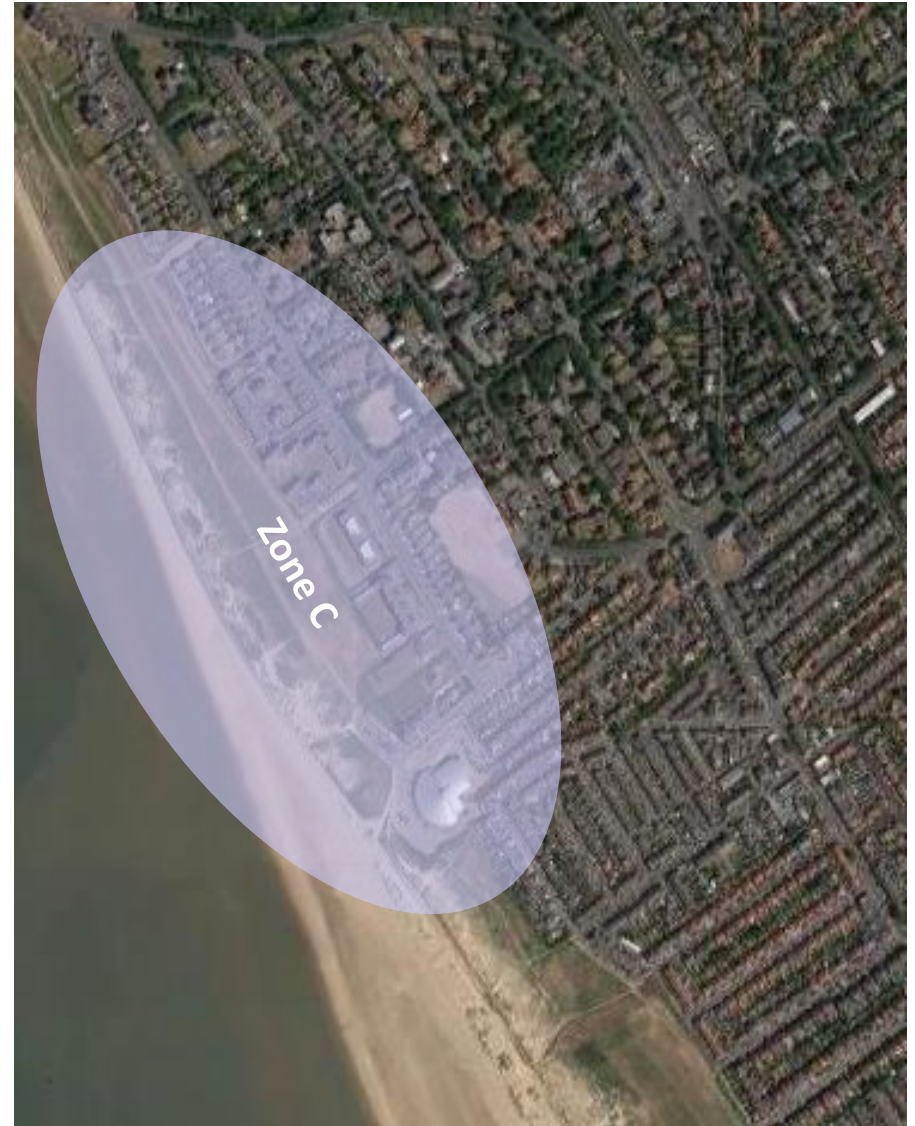


## Zone C:

### Burbo Bank Road to Crosby Baths

#### In 2030 this zone of the park will have:

- Better links to public transport, cycling and walking networks, including well designed signage and information provision
- Enhanced car parking and cycle storage
- On site interpretation to educate visitors and park users about the cultural and natural heritage and encourage positive behaviours to conserve this heritage
- Safe viewing points to see Antony Gormley's 'Another Place', accessible where possible
- Improved visitor facilities which are accessible to all



## **Zone D:**

### **South of Crosby Baths to North of Marine Lake/South Rd**

#### **In 2030 this zone of the park will have:**

- Better links to public transport, cycling and walking networks, including well designed signage and information provision
- Better on site interpretation
- Safe viewing points to see 'Another Place' and alternative access to the beach
- A new multi-use path that provides a fully accessible alternative to using the current promenade
- Areas managed for nature conservation including a natural dune frontage



## Zone E: South Road to Cambridge Road

**In 2030 this zone of the park will have:**

- Areas managed for nature conservation including a natural dune frontage
- A new multi-use path that provides a fully accessible alternative to using the current promenade
- Better links to public transport, cycling and walking networks, including well designed signage and information provision
- Better on site interpretation
- Safe viewing points to see Antony Gormley's 'Another Place' and alternative access to the beach



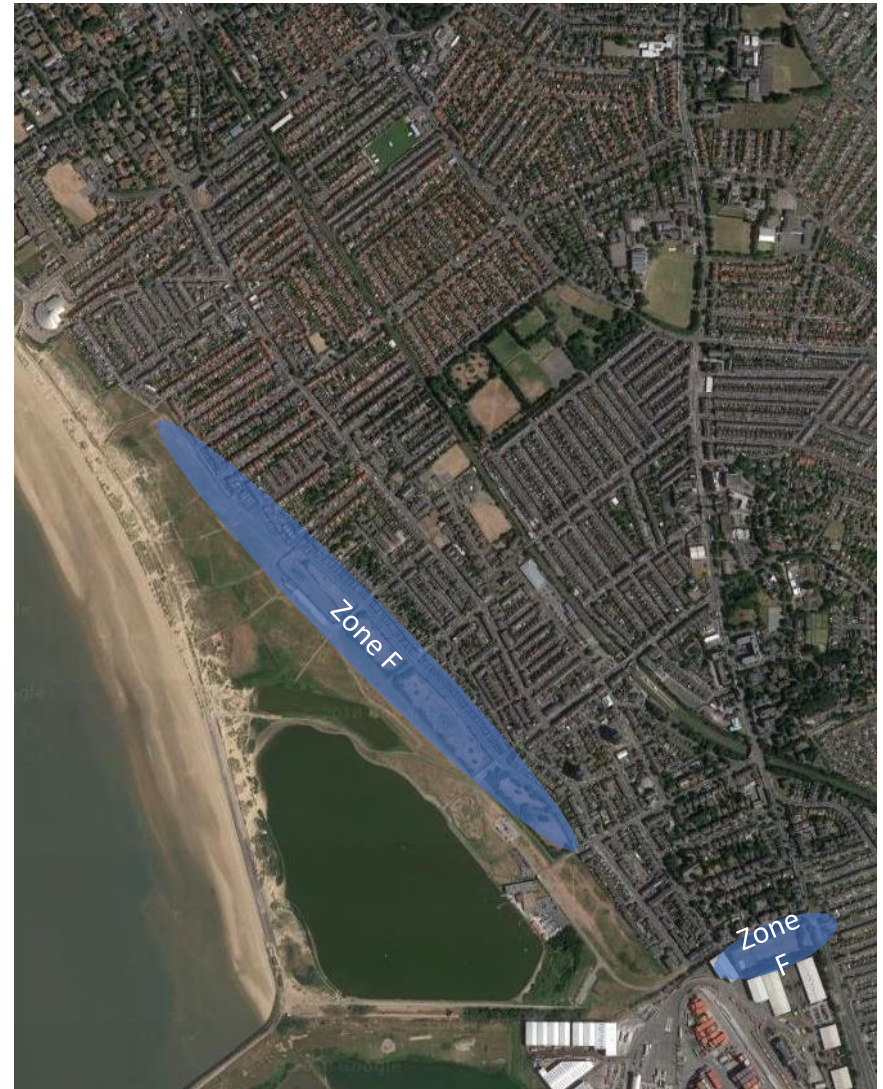
- Better lighting appropriate to the area
- Improved visitor and leisure facilities, accessible to all

## Zone F:

**Beach Lawn, Crescent, Adelaide and Marine Gardens and Potters Barn Park**

### **In 2030 this zone of the park will have:**

- Formal gardens suited to the changing climate and needs of visitors
- Enhanced conservation value supporting the historic built environment
- Better links to public transport, cycling and walking networks, including well designed signage and information provision
- Better on site interpretation
- Better lighting appropriate to the area
- Better links to the rest of the park and other green space in the area



## On the go, and in the pipeline...

- **Developing a major coastal protection and flood alleviation project**
- **Improving the existing habitat for our spectacular flora and fauna e.g. the 'Bee Inspired' scheme**
- **Improving accessibility for walkers and cyclists e.g. England Coast Path and national cycle network**
- **Boosting opportunities to increase health and wellbeing e.g. events and activities such as Park Run**
- **Improving visitor facilities e.g. new public toilets at South Road entrance and lighting improvements**
- **Working with the Antony Gormley Studio to repair and maintain the famous statues**

## Challenges:

- Need to secure necessary resources to support this vision
- All proposals need to go through appropriate assessments and gain planning permission
- Need to ensure proposals balance the social, economic and environmental needs of the site now and in the future
- Need to address negative impacts of any proposals on the environment
- Work closely with our communities, partners and organisations, understanding each others' needs

An aerial photograph showing the Crosby Coastal Park area. In the foreground, there's a large, flat, sandy beach. Behind it, a green park area with some trees and paths leads to a residential area with many houses. In the background, there's a large body of water, likely the Mersey estuary, with some industrial buildings and a bridge visible in the distance. The sky is clear and blue.

## Next steps...

***Sharing the Crosby Coastal Park vision and capturing YOUR views.....***

**We want to hear what YOU think about:**

- Coastal defences
- Improving facilities, transport links and routes
- Looking after 'Another Place' (the Gormleys)
- Conserving the flora and fauna of the coastal park

**In summary, how we manage this landscape to balance the needs of residents, visitors and nature within available resources**

**Make your comments by 1<sup>st</sup> September 2019 online at [yourseftonyoursay@sefton.gov.uk](mailto:yourseftonyoursay@sefton.gov.uk)**